

## Curated Services

Kuehne Laboratory Services specializes in analyzing a variety of samples, including water, salt, brine, sodium hypochlorite, caustic soda, and hydrochloric acid. Our comprehensive assessment covers critical parameters such as density, concentration, metals, ions, pH, and conductivity.

At the heart of our mission is a commitment to providing continuous support to our clients. We transform routine samples into user-friendly results, empowering our clients to maintain high-quality assurance standards, make informed decisions, and optimize their operations.



**Corporate Headquarters  
New Jersey Plant**  
86 N Hackensack Avenue  
Kearny NJ 07032

**Connecticut Plant**  
71 Welton Street  
New Haven CT 06511

**Delaware Plant**  
1645 River Road  
New Castle DE 19720

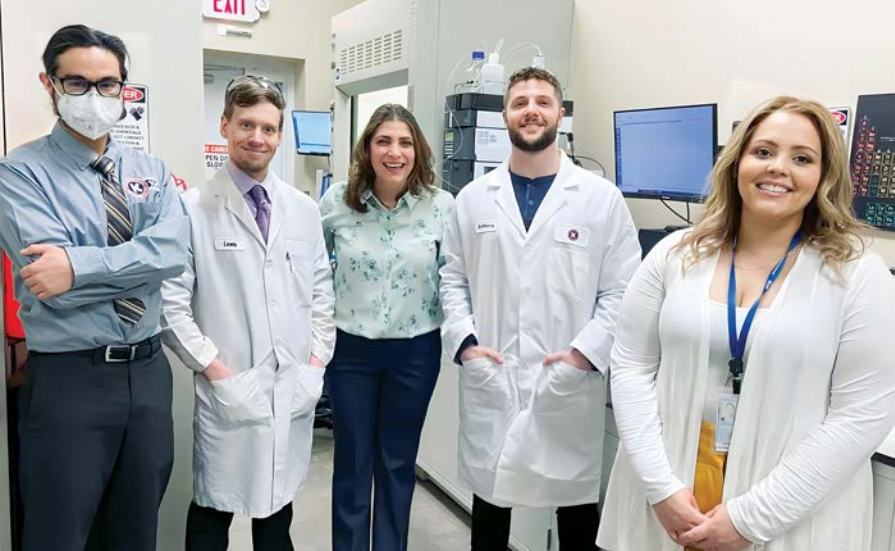
973 589-0700  
LabServices@kuehnecompany.com  
www.kuehnecompany.com



**Kuehne**  
LABORATORY SERVICES

# Committed to Excellence

Transforming routine samples  
into user-friendly results



## Our Team of Experts

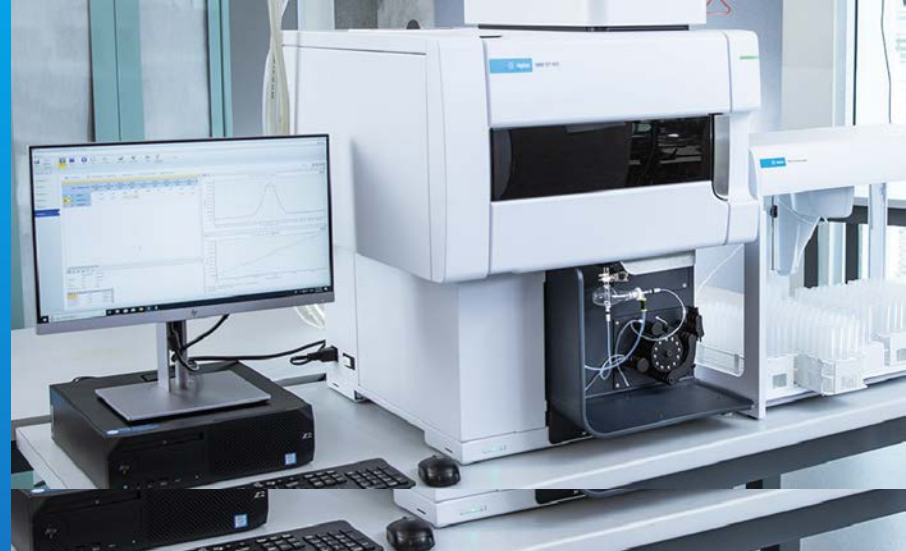
With over 55 years of combined experience and diverse educational backgrounds in analytical and process manufacturing, our scientists and technicians deeply appreciate the significance of accurate data. They bring a wealth of knowledge gained from working across various industries, including environmental labs, aviation, marine, and particularly the chlor alkali sector.

They are proficient in both ISO and Six Sigma certification programs and have extensive exposure analysis expertise. Additionally, they possess a vast understanding of instrumentation, enabling them to analyze samples with exceptional precision, even down to parts per billion.

## Proficiencies

We stand prepared to tackle your analytical challenges in the realm of inorganic materials, transforming your samples into valuable, actionable data. Our proficiency extends to the following areas:

- ICP-MS QQQ
- ICP-OES
- HPLC
- Density Meter
- pH Meter
- Conductivity Meter
- Titrations



## On-Site Instrumentation

### Inductively Coupled Plasma (MS & OES)

Empowers us to conduct precise and accurate measurements on metals within your samples. Additionally, we hold certification for analyzing drinking water.

### Density, pH, and Conductivity Meters

Empowers us to monitor the properties of your samples, permitting you to maintain control of your process.

### Auto Titrators

Empowers us to measure acid or base concentrations, as well as sodium hypochlorite concentrations.

### Ion Chromatography

Empowers us to analyze important ions such as chlorides, chlorates, and sulfates.